

Next Generation i-CAT® Enhanced Features

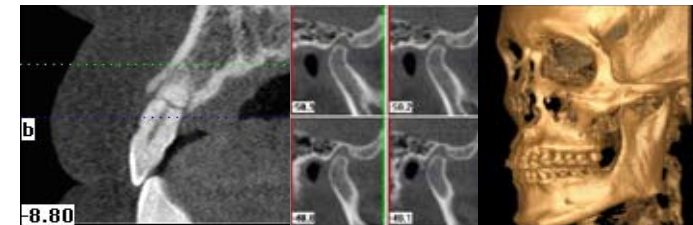
- Typical scan time of 8.9 seconds for improved diagnosis.
- Shortest reconstruction time of under 30 seconds for improved workflow.
- Manageable file sizes of less than 50 MB to quickly and easily share images.
- Extended Field of View capturing all anatomical data up to 17 cm. in height and 23 cm. in diameter.
- An Amorphous Silicon Flat Panel sensor, proven to be the best available sensor technology in the industry, adjusts to capture data in two views: portrait and landscape.
- Significantly less radiation than a medical CT scan.



3-D Data for:

- Implant Planning
- Third Molar Extractions
- Impactions
- TM Joints
- Supernumeraries
- Airway Assessments
- Panoramics
- Cephalometrics

Anatomically Accurate Data

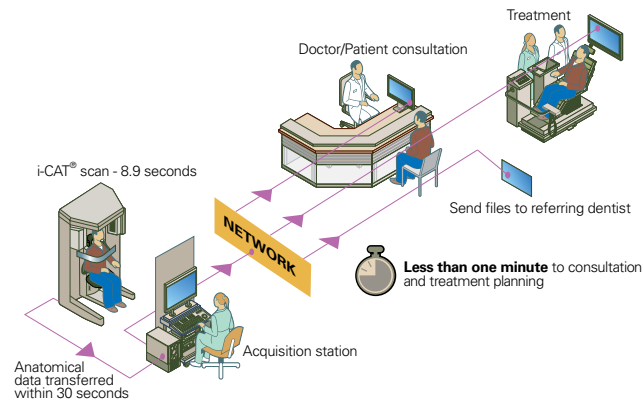


Virtual Planning

"For the first time in my 30 years of practice, I have been able to image patients in true one-to-one size, thanks to the i-CAT®, which improves diagnosis, accuracy, and treatment results."

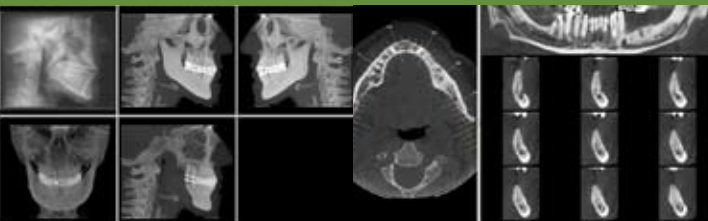
*William Arnett, DDS, FACD
Santa Barbara, CA*

Workflow Process



"Simply put, the i-CAT® dramatically advances patient care. Virtual treatment planning has never been easier than with the i-CAT's combination of high-tech in-office scanning and immediate three dimensional digital reconstruction of a patient's anatomy. The 3-D anatomically accurate imaging allows me to create the most complete treatment plans benefiting patients with the most predictable surgical outcomes. This machine opens the door to unlimited possibilities in my implant practice!"

*John M. Fish, DDS
Hildebran, NC*



Surgical Predictability

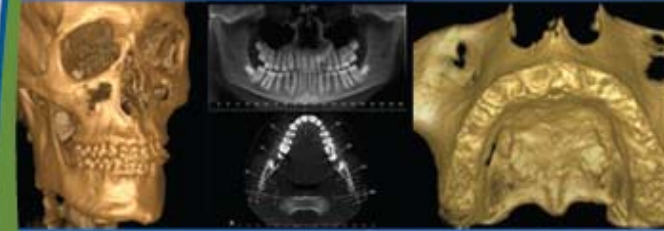


The Next Generation i-CAT® offers a sleek new redesign and enhanced features for faster and even more accurate treatment planning and surgical success.



To learn more about the next generation i-CAT® 3-D dental imaging system contact your Henry Schein representative or call Imaging Sciences International at (800) 205-3570.

i-CAT®



The Leader in
Cone Beam 3-D
Dental Imaging

"The i-CAT® allows me to uncover anatomically true information on my orthodontic and TMJ patients. Areas such as sinuses, airway passages, the relationships between the teeth and jaw structure along with the temporomandibular joints can all be visualized and measured accurately. This would be impossible to do with traditional panoramic or cephalometric radiographs."

*William Harrell, DMD
Alexander City, AL*

i-CAT®

The Most Complete 3-D Imaging System
for Quicker and More Comprehensive
Diagnostic Treatment Planning

Phone: 215-997-5666
Fax: 215-997-5665

E-mail: info@imagingciences.com
www.imagingciences.com

Imaging
Sciences
International 

Imaging Sciences International • 1910 North Penn Road • Hatfield, PA 19440